



Statewide Independent Wholesalers Limited

ABN 51 009 519 546

Changes to Tasmanian Temperature Control Distribution

Hi Team,

As previously communicated, the SIW Tas RDC is currently being expanded to include a Temperature Controlled (TC) area. The Tasmanian DC consolidation will see the transition of all chilled, frozen and meat lines into the SIW Tas RDC from Breadalbane TC DC (BDC) and SRT TC facility. Phase 1 of the construction will be completed on 23rd August and the site will be handed over to the SIW team to commence transition activities. The first receipt at the new TC site will on 28th August 2019.

August Milestones:

- BDC employee inductions to new DC to commence
- Refrigeration plant operational and rooms brought down to temperature
- Office fit out completed
- Line marking to be completed
- Installation of armco and raised walkway pedestrian protection to be completed

Dates to remember:

- First pick from new DC for TIR stores will be all frozen products and will begin on **Monday 30th September**
- Chilled product supply will commence on **Monday 14th October**
- Decommissioning of Breadalbane DC will commence 14th October and take approximately 6 weeks
- Should there be any issues with the new DC Go Live stores will be advised as soon as possible

Key Call Outs

- There should be no impact to deliveries for TIR stores as SRT will be consolidating loads to minimise impact on TIR stores
- Recruitment of extra staff to support 'Go Live' has commenced with approximately 30 extra team members inducted
- Planning for transfer of stock between the two DC's during and post Go Live is well underway

Support:

For any general queries please contact Stuart Robins on 0438 159 642 or via email srobins@siw.com.au.

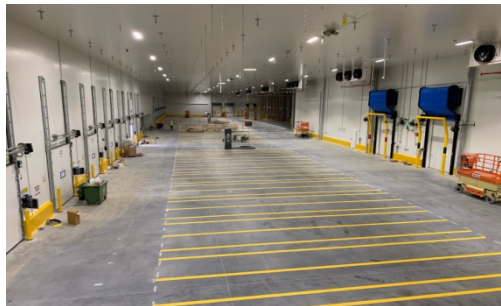
Contact list for support during the transition period:

Area	Name	SIW Contact
First point of contact	Customer Service Team	Monday to Saturday (till 10 am) (03) 6391 0906 Saturday 10 am to Sunday 8 pm (03) 6391 0930
DC Operations	Andrew Mackenzie Operations Manager	amackenzie@siw.com.au 0438 703 636
Transport	Shane Harrison Transport Manager	shane.harrison@siw.com.au 0408 149 481

Here are a few pictures from the site:



New Freezer at TasRDC



TC Despatch area at TasRDC



TC Despatch dock at TasRDC

Thank you,
Stuart Robins
Tas RDC Commercial Manager

"Delivering the Goods"

POSTAL ADDRESS:	Locked Bag 3, Launceston TAS 7250	PHONE: (03) 6391 0800	FAX: (03) 6391 0950
HEAD OFFICE & TASMANIA RDC:	8 Translink Avenue, Western Junction	PHONE: (03) 6391 0333	FAX: (03) 6391 8991
BREADALBANE DC:	13 Richard Street, Western Junction		