

The background of the entire page is a photograph of four wind turbines standing on a grassy hill. In the foreground, a large array of solar panels is visible, angled towards the sun. The sky is a mix of orange, yellow, and blue, indicating a sunset or sunrise. The overall theme is renewable energy.

# **TASMANIAN GREENS**

# **ENERGY STRATEGY**

**A Renewable and Secure  
Energy Supply for Tasmania**

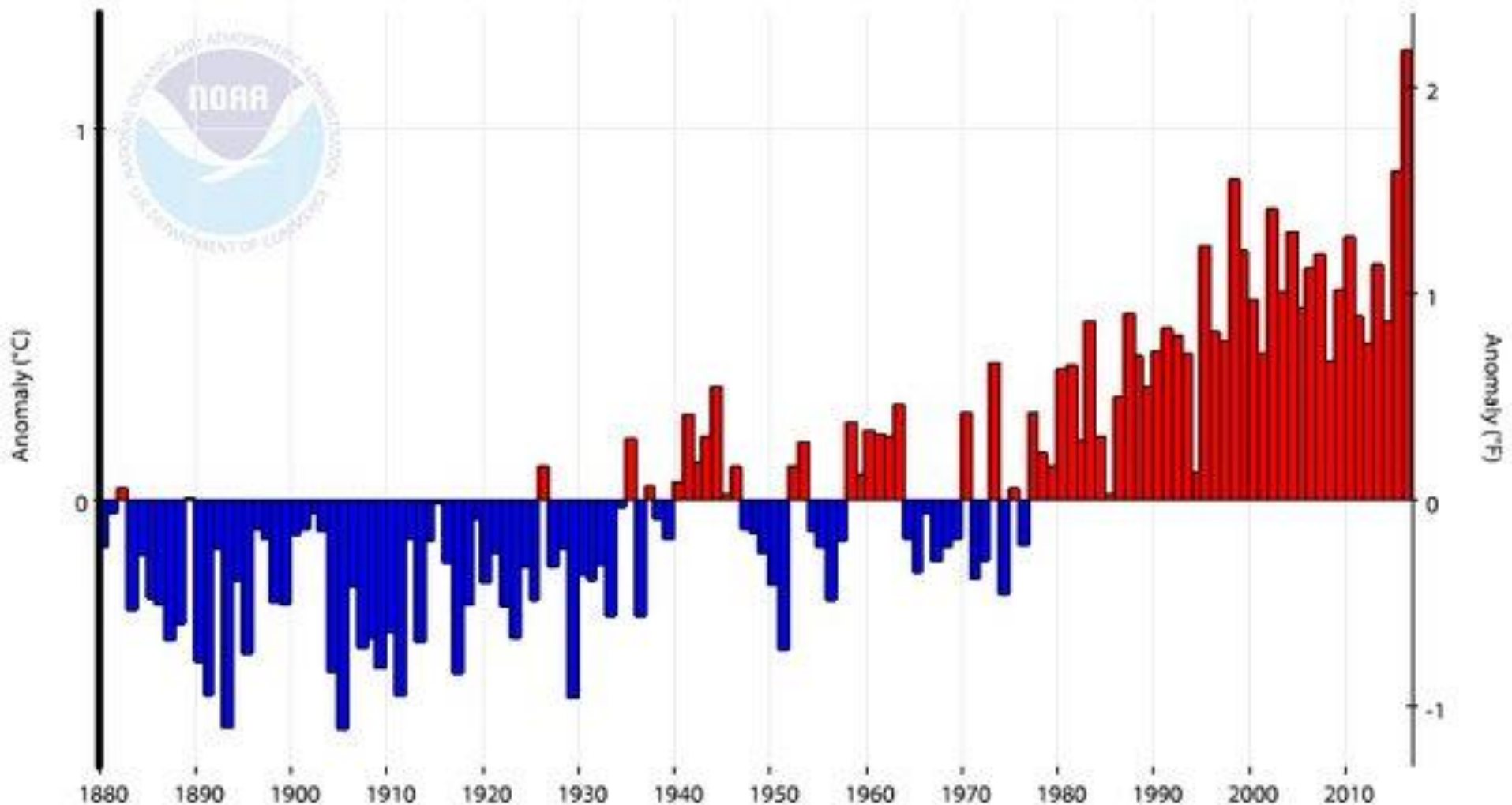
**[Tasmps.greens.org.au](http://Tasmps.greens.org.au)**

The logo for 'The Greens' is a white triangle with a green border. Inside the triangle, the words 'THE' and 'GREENS' are written in green, stacked vertically.

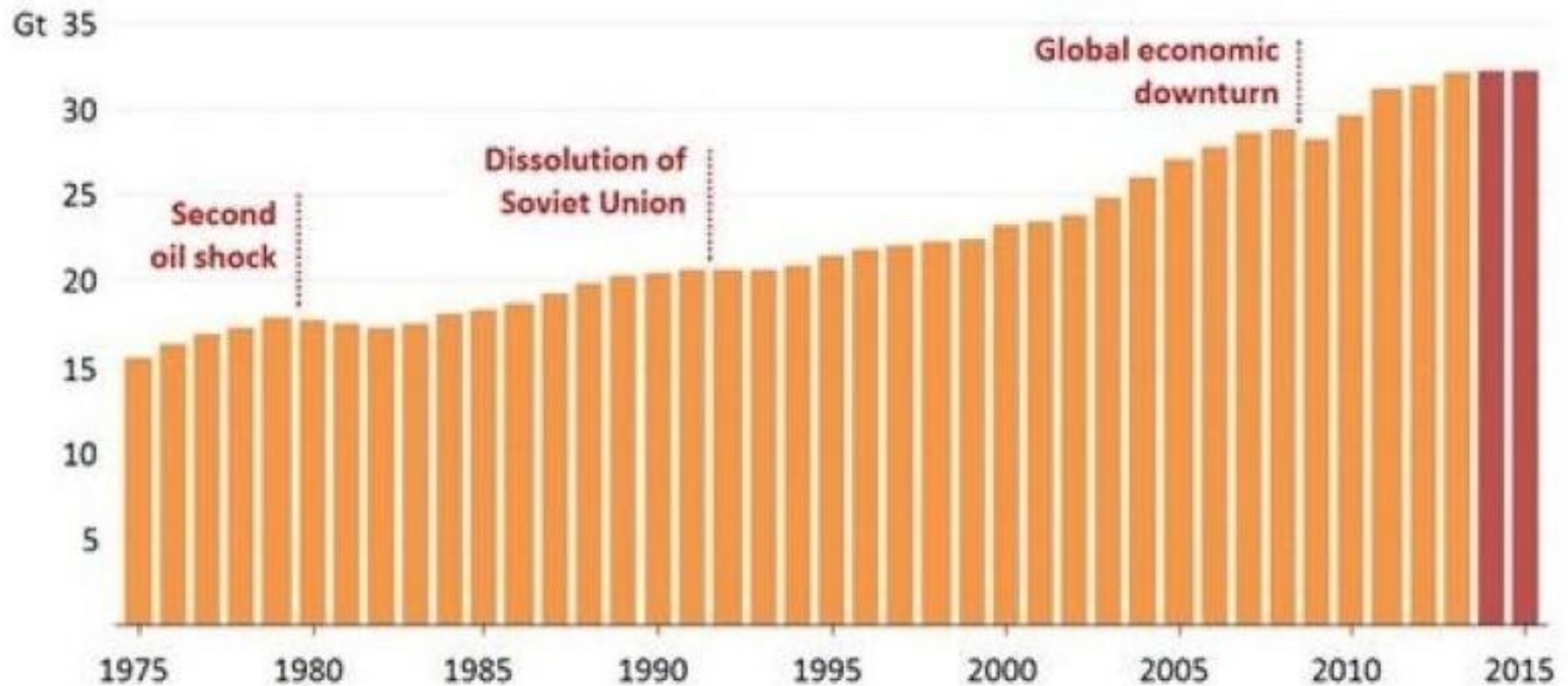
**THE  
GREENS**

Authorised by Rosalie Woodruff MP, 7 Franklin Wharf Hobart 7000.

# Global Temperature Anomalies – 1880 to 2016



# Global CO<sub>2</sub> Emissions 1975-2015



Source: IEA

# Target 1

Produce at least 100% of our net electricity needs from renewable energy and be a net exporter of renewable electricity by 2022.

# Target 2

Reduce Tasmania's use of liquid fuels by 30% on 2015 levels by 2025.





The background of the entire page is a photograph of four wind turbines standing on a grassy hill. In the foreground, a large array of solar panels is visible, angled towards the sun. The sky is a mix of orange, yellow, and blue, indicating a sunset or sunrise. The overall theme is renewable energy.

# **TASMANIAN GREENS**

# **ENERGY STRATEGY**

**A Renewable and Secure  
Energy Supply for Tasmania**

**[Tasmps.greens.org.au](http://Tasmps.greens.org.au)**

The logo for 'The Greens' is a white equilateral triangle with a green border. Inside the triangle, the words 'THE' and 'GREENS' are stacked vertically in a bold, green, sans-serif font.

**THE  
GREENS**

Authorised by Rosalie Woodruff MP, 7 Franklin Wharf Hobart 7000.